

# Soil & Water Conservation District

Volume 49, Issue 2

NEWSLETTER

August, 2011

## AEM: A Conservation Roadmap

by Bob Kalbfliesh

The Agricultural Environmental Management (AEM) program has been around for about a dozen years now, but I'm not convinced that people really know what AEM can do for their farming operation. Let's say you want to take a cross-country trip with your family. You wouldn't just pack the kids and the dog in the car and go, would you? For such a big trip you certainly would have planned out many aspects. You would have a budget – everyone has limited dollars. The plan would also include a map or GPS unit, an itinerary, how many days you will be gone, and most important, where is your destination?

AEM can be a similar roadmap to your farm. Most farmers are in the business for the long haul, with goals and objectives along the way. You would consult your ag lender, veterinarian, tax person, etc. Why not use AEM as part of that roadmap to help you navigate the environmental aspects of farming? It's voluntary and it's free, and it can help you reach that destination you're traveling to.

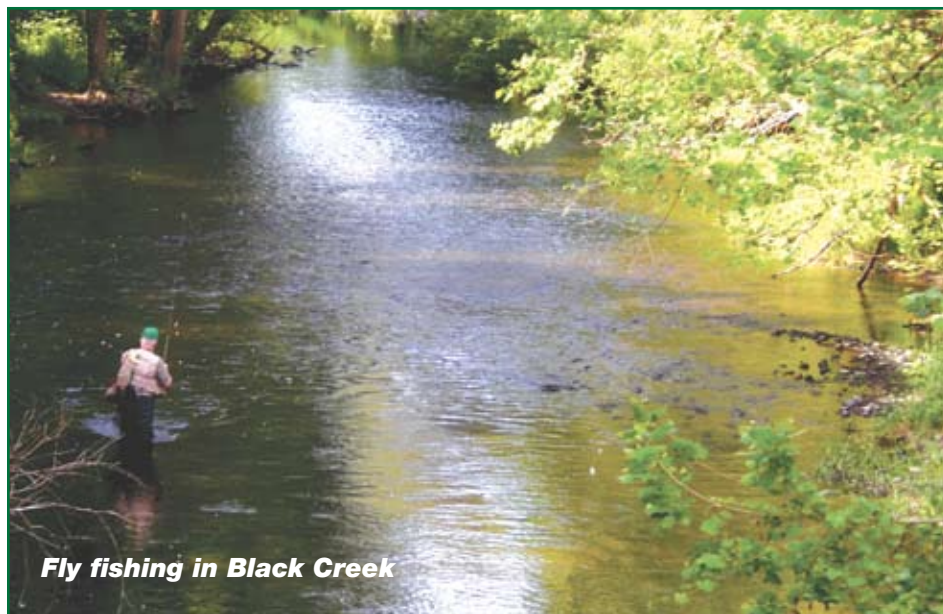
Let AEM be your conservation roadmap to a successful trip. ■

**See our display in the  
County Bount Building at the  
Washington County Fair**

**Check out our rain garden  
and the Ag Plastics Baler at  
the end of the building**

## Upcoming Workshops

by Corrina Aldrich



*Fly fishing in Black Creek*

Due to the success of last summer's Pond Management Workshop, held in conjunction with the Agricultural Stewardship Association (ASA), Washington County SWCD and ASA will be holding a series of educational workshops this fall and winter. These two organizations, with a common conservation mission, wish to continue educational conservation programming for land owners.

The first workshop will be on September 15th from 5 to 7 pm and will feature Carl Schwartz from the US Fish and Wildlife Service in Syracuse. Carl has been the lead on many projects on the Battenkill and Salem's White Creek in recent years. Carl has worked closely with Trout Unlimited, Battenkill Conservancy and the Battenkill Alliance, along with the SWCD, to repair bank issues and restore trout habitat on these two important fisheries. Although Carl's specialty is restoration, with a focus

on improving fish habitat, this workshop will also provide ample opportunity to discuss protection of agricultural fields from erosion along waterways.

Carl will be leading a tour along a reach of Black Creek in Salem at Black Creek Valley Farm owned by Don and Seth McEachron. The Black Creek is classed as a C level stream, which means its best usage is for "fishing and fish propagation: suitable for primary and secondary contact recreation even though other factors may limit the use for that purpose", with a further designation of "T" as potential for trout breeding habitat by NY Dept of Environmental Conservation. The main branch of the Black Creek runs from the hamlet of West Hebron south along Cty Rte 30 to the Greenwich-Salem town line where it joins the Battenkill. The White Creek that runs through the Village of

*(continued on page 7)*

# USDA Notice to Women and Hispanic Farmers and Ranchers: Compensation for Claims of Discrimination

Syracuse, NY - If you are a female farmer or rancher or a Hispanic farmer or rancher and you believe that the United States Department of Agriculture (USDA) improperly denied farm loan benefits to you for certain time periods between 1981 and 2000 because you are a female, or because you are Hispanic, you may be eligible to apply for compensation, the USDA State Food & Agriculture Council (SFAC) in New York announced in joint news release issued today.

You might be eligible if:

- you sought a farm loan or farm-loan servicing from USDA during that period; and
- the loan was denied, provided late, approved for a lesser amount than requested, approved with restrictive conditions, or USDA failed to provide an appropriate loan service; and
- you believe these actions occurred because you are female or Hispanic.

"We want all producers who may be eligible to be aware of this claims process for female and Hispanic farmers and ranchers, as well as the recent settlements with Native American and African American farmers and ranchers, so they can come forward and participate in these processes," said Jill Harvey, State Director of Rural Development (RD) in New York, who serves as this year's chair of the SFAC. The SFAC is comprised of State-level agency heads of the three USDA partner agencies - RD State Director Jill Harvey, Farm Service Agency (FSA) State Executive Director James Barber and Natural Resources Conservation Service (NRCS) State Conservationist Astor Boozer - with membership from other USDA agencies in New York.

If you want to register your name to receive a claims package in the female and Hispanic farmers claims process, you can call the Farmer and Rancher Call Center at 1-888-508-4429 or

access the Website: [www.farmerclaims.gov](http://www.farmerclaims.gov).

In 2011, a Class Administrator will begin mailing claims packages to those who have requested one through the Call Center or Website. The claims package will have detailed information about the eligibility and claims process. In order to participate, you must submit a claim to the Claims Administrator by the end of the claims period.

The claims process offers a streamlined alternative to litigation and provides at least \$1.33 billion in compensation, plus up to \$160 million in farm debt relief, to eligible Hispanic and women farmers and ranchers.

The claims process provides up to \$50,000 for each woman or Hispanic farmer who can show that USDA denied them a loan or loan servicing for discriminatory reasons for certain time periods between 1981 and 2000. Hispanic or female farmers who provide additional proof and meet other requirements can receive \$50,000. Successful claimants may also be eligible for funds to pay the taxes on their awards and for forgiveness of certain existing USDA loans. There is no filing fees or other costs to claimants to participate in the program. Participation is voluntary, and individuals who opt not to participate are not precluded by the program from filing a complaint in court.

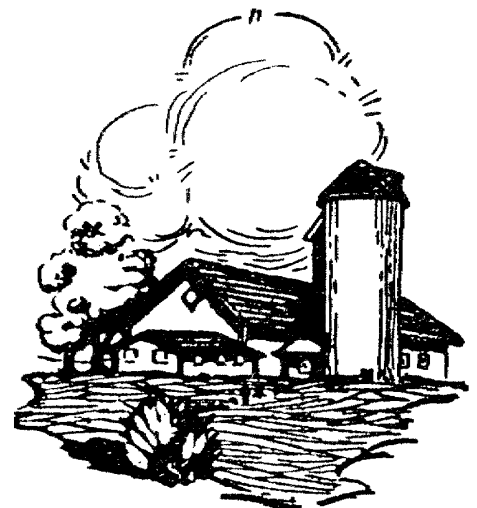
If you are currently represented by counsel regarding allegations of discrimination against USDA or in a lawsuit claiming discrimination by USDA, you should contact your counsel regarding your claims process. USDA cannot provide legal advice to you. You are not required to hire an attorney to file a claim, but you may contact a lawyer or other legal services provider in your community for additional guidance.

Audio and video public service announcements in English and Spanish from Secretary Vilsack and downloadable print and web banner ads

on the Hispanic and women farmer claims process are available at: [http://www.usda.gov/PSAs\\_Print\\_and\\_WebBanner\\_Ads.xml](http://www.usda.gov/PSAs_Print_and_WebBanner_Ads.xml). For more information, contact the Farmer and Rancher Call Center at 1-888-508-4429 or access the following Website: [www.farmerclaims.gov](http://www.farmerclaims.gov).

This announcement follows the Obama Administration's settlement of litigation brought by Native American farmers and ranchers and African American farmers. Any Native American farmer or rancher who was denied a Farm Loan or Loan Servicing by the USDA between Jan. 1, 1981 and Nov. 24, 1999, may be eligible for benefits from a Class Action Settlement. To request a Claims Package or for more information, call 1-888-233-5506 or visit [www.IndianFarmClass.com](http://www.IndianFarmClass.com). African-American farmers who submitted a request to file a late claim on or between October 13, 1999 and June 18, 2008 under the 1999 settlement in the earlier class action known as *Pigford v. Glickman* ("Pigford") and who did not receive a merits determination of their discrimination claim should call 1-866-950-5547 or 1-866-472-7826 or visit [www.blackfarmercase.com](http://www.blackfarmercase.com). ■

USDA is an equal opportunity provider and employer. To file a complaint of discrimination, write: USDA, Director, Office of Civil Rights, 1400 Independence Ave., SW, Washington, D.C. 20250-9410 or call (800) 795-3272 (voice), or (202) 720-6382 (TDD).



---

## Recently Completed AG Projects



*Twin Brooks Farm – Hartford – The Stewarts recently upgraded their old earthen manure storage (left) to an engineered Ag Waste Storage Facility (right), with funding assistance from the District's NYS Ag Nonpoint Source grant. Charles Friedman Excavation of Hudson Falls completed the job.*



*Heritage Hill Farm – Fort Ann – The Mattisons completed this roofed barnyard (right) to eliminate polluted runoff from Halfway Creek. The pollution originated from the former open barnyard (left). The project was funded through a special Southern Lake Champlain Water Quality Improvement Project through the Lake Champlain Basin Program. The work was completed by S&L Builders of Pennsylvania.*

---

## Ag Plastics Baling Update

by Corrina Aldrich

The Recycling Agriculture Plastics Project of Cornell has been busily working to find and develop markets for the plastics that have been baled, and they have found success. Terrawalk made by Rubbersidewalks Inc. of California is very interested in using the bale wrap (all white) plastic from farms to produce their sidewalk pavers. They have a production facility in Indiana that will be taking the bale wrap to convert it into the sidewalk pavers. This company has already produced pavers made from recycled rubber particles for a number of years, with great success. These sidewalk products are extremely durable and resist breaking, chipping and cracking. They are LEED and LID qualified products for green building and landscaping concepts. The LEED credits possible for this product are recycled content, stormwater drain-

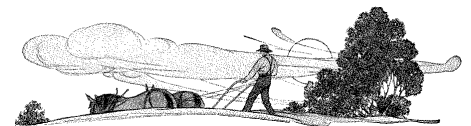
age, heat island effect, innovative design, regional materials, and also reduce the sound of pedestrian and wheeled traffic. They are cost-effective to install and are a product that can be purchased through GSA Contract.

The biggest challenge at this point for ag plastics recycling is to produce enough bales of plastic in a shorter period of time to be able to efficiently truck the materials to the recycler. It takes approximately 40 bales of the same product to make a full truck load for shipping.

While a viable market for round bale wrap has been found, the folks at RAPP are still looking to find markets for the bunk silo and ag bag plastic. Row crop covers and mulch plastic are two other types of plastic that need markets as well. The Bigfoot Ag Plastics Baler purchased by DEC

for the Recycling Ag Plastics Project is spending July and part of August in Saratoga County and then will be coming back to Washington County for display at Washington County Fair by the County Bountly building.

We will be scheduling training sessions for the baler in late September or October and look forward to hearing from farmers who want to use the baler this fall. Demand for use of the baler will determine how long the baler will stay in Washington County before it heads back to Saratoga County, so get your requests in soon, and remember to follow the best management practices to produce a clean dry product. ■



---

# Cover Crop Demonstration

By Bob Kalbfliesh

Last September the District, along with Aaron Gabriel of Cooperative Extension, held a Field Day on the Steve Petteys farm in Easton. The purpose was to demonstrate different types of aeration equipment and how they can be used to plant Rye, incorporate manure and prepare seed beds. We planted Winter Rye, Winter Wheat and Annual Ryegrass using the various aeration equipment supplied by the local machinery dealers.

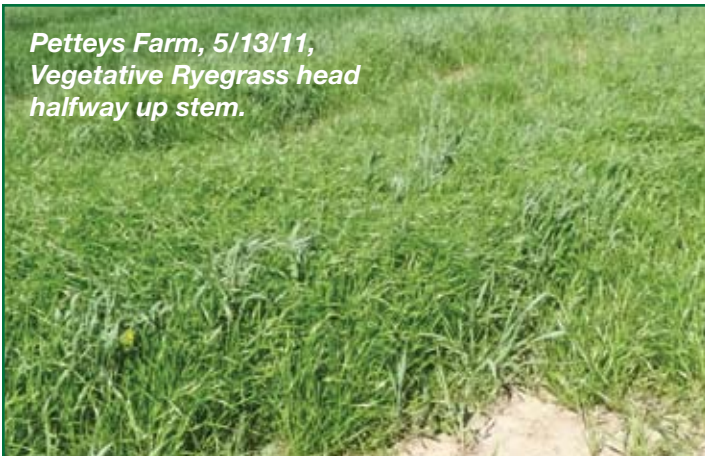
Aaron took forage samples in May of this year with Winter Rye at 18% crude protein, Winter Wheat at 10% and Annual Ryegrass at 14%. The

demonstration had us asking many “what ifs”. What if we aerate part of a field and not the other? What if we daily spread manure? Or seed cover crops throughout the fall? How would the cover crops perform?

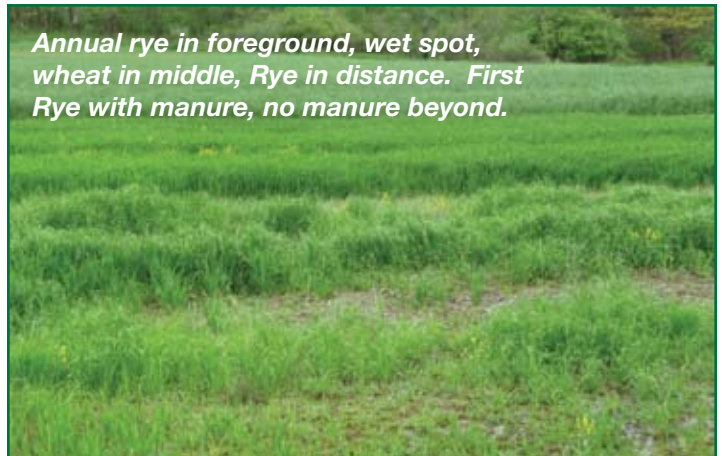
To answer some of these what ifs, we will again be working with Aaron this fall on controlled demonstration cover crop plots. We have several farms establishing cover crops with the different scenarios listed above. Our goal is to have a field day in early December. Yes, you read that right, December, to observe how well the cover crops were established. We

will then hold a second field day in late April to see how well they grew through the spring and what we might expect for a forage harvest.

The District is excited to be working with Cooperative Extension to continue to bring you these field days. We will be posting the participating farms and dates in the near future on our website at [www.washingtoncountyswcd.org](http://www.washingtoncountyswcd.org). If you would like to do some plots on your farm, please contact our office or Aaron Gabriel at Cooperative Extension. ■



*Petteys Farm, 5/13/11,  
Vegetative Ryegrass head  
halfway up stem.*



*Annual rye in foreground, wet spot,  
wheat in middle, Rye in distance. First  
Rye with manure, no manure beyond.*



---

## Out to Pasture!

Years ago when I was thin and had blonde hair, I started as a Soil Conservationist in Clinton County. Now, 27 years later, I have a slightly manlier build, and my hair is platinum blonde with the Sergeant Joe Friday hair style. If you don't remember Joe Friday, you're too young to care anyway! Yes, age takes its toll!

Anyway, I just want to inform all of the folks I have worked with over the last 27 plus years that I am finally going out to pasture. I have accepted an early retirement, with my last day June 30th 2011.

I have worked in Washington County, Clinton County, and Essex County and assisted in Warren County. I have worked with some of the greatest folks one can ever work with.

**I just want to say that I have been HONORED and PRIVILEGED to work with the BEST FARMERS this Nation has to offer, and I am proud to have worked with every one of you.**

**THANK YOU**, for the opportunity to have worked and shared my life with you. My memory will always have the thought of walking green fields of Corn, Soybeans, Alfalfa Hay, and especially my favorite, LUSH GREEN PASTURES!! (Hey what can I say, I'm a pasture guy). I have made some of the best friendships a person could have.

I am not headed to FLORIDA to wear white pants and loafers! I will be staying in Essex County as a proud resident of the Town of Moriah, wearing blue jeans and green rubber boots.

Once again, I thank you for the opportunity to walk your farms and forests, and for the faith and support you have given me over the years. I have turned myself OUT to “MANAGED PASTURE”!!!

Respectfully,  
Rich Redman

**Note:** Rich served in Washington County as a Soil Conservationist from 1985-1990. His work with rotational grazing and bioengineering stream projects jump started these concepts as beneficial, cost effective conservation.

- Joe Driscoll

# FALL 2011 FISH ORDER FORM



## Washington County Soil & Water Conservation District

USDA Service Center, 2530 State Route 40, Greenwich, NY 12834

518-692-9940, ext. 3

*Orders must be received at the above address by*

*4:00 pm on September 23, 2011. All pond stocking requires a NYS-DEC permit.*

Name: \_\_\_\_\_

Complete Mailing Address: \_\_\_\_\_

Daytime telephone number: \_\_\_\_\_

Species	Size	Price (\$)				#	\$
		Each	25 Fish	50 Fish	100 Fish		
Rainbow Trout	4" to 6"	<i>DEC will not issue permits for pond stocking of Rainbow Trout in the Battenkill Drainage Basin. Must purchase at least 50</i>					
Brook Trout	4" to 6"	<i>Must purchase at least 50</i>		125.00	240.00		
Largemouth Bass	6" to 8"	<i>Must purchase at least 25</i>	130.00	240.00	460.00		
Channel Catfish	6" to 8"	<i>Must purchase at least 25</i>	70.00	120.00	200.00		
Fathead Minnows	1" to 2"	<i>Must purchase at least 100</i>			16.00		

Subtotal: \$ \_\_\_\_\_

Add 7% NYS Sales Tax: \$ \_\_\_\_\_

**Payment must accompany order.**

Balance Due: \$ \_\_\_\_\_

I realize that the Washington County Soil and Water Conservation District is not responsible for any loss of fish occurring during transport from pick-up location to pond by the pond owner or a representative of the same.

\_\_\_\_\_  
Signature of Pond Owner

- **Payment must accompany order.** Make checks payable to "Washington County SWCD".
- Pickup will take place in late September or early October at the District office parking lot.

---

# Fish Available for Ponds

by Joe Driscoll

Once again the District will be offering several varieties of fish for stocking private ponds. Stocking public water (lakes, etc.) is allowed but requires a more involved review process and permit which you must complete with DEC prior to ordering fish.

Rainbow and Brook Trout in the 4-6" range will be available for cold water ponds. Largemouth Bass and Catfish will be available for warm water ponds. More details on species requirements appear below.

If you have any pond-specific questions related to fish stocking or pond management in general, feel free to contact our office, or request a site visit via the SWCD website at [www.washingtoncountyswcd.org](http://www.washingtoncountyswcd.org). We will be accepting fish orders through September 23. Fish pickup will be at the USDA Service Center in early October.

Stocking fish requires a valid NYS-DEC permit. Contact DEC Bureau of Fisheries at 518-623-1200 for more specific permit information.

## **Bass:**

- Ponds should average a maximum water temperature of 75°-85° F during the last two weeks of July. A depth exceeding 6' is desirable,

and 8-10' offers better protection against winter kill from oxygen depletion.

- The recommended stocking rate for largemouth bass is 100 fish per acre of pond surface (1 acre = 200'x 200', or 25 fish for the average \_ acre farm pond).
- Largemouth bass will actively reproduce in most farm ponds that fit the above-mentioned depth and temperature requirements.

## **Trout:**

- For rainbow trout the pond should not exceed a maximum summer temperature of 72° F at average depth, during the first two weeks of August, although fluctuating surface temperatures near 78° F for a couple of days are acceptable. Spring-fed ponds exceeding 10' of depth usually meet the temperature requirements. This is especially true at higher elevations where summers tend to be cooler. Ponds in wooded or shady areas will also stay cooler during the critical mid-summer period.
- Trout usually do not reproduce in a pond unless there is a spring-fed inlet stream of adequate size. For this reason, trout populations

usually die out in most ponds over a 2-5 year period. After this time, restocking is required to maintain populations.

- The recommended stocking rate for rainbow trout is 400 fish per surface acre of pond, or 100 fish for the average \_ acre farm pond.
- Brook Trout prefer temperatures below 65°F.

## **Channel Catfish:**

Channel catfish are a warm water fish and a prized game fish. They can reach sizes of up to 3' long and 20 pounds in farm ponds. A stocking rate of 50 fish is suggested for \_ acre (100' x 100') ponds. Catfish can live in both cold and warm water ponds, but do not spawn unless water temperatures exceed 72° for at least 3 weeks. Contrary to popular belief, channel catfish do not burrow in the mud and create cloudy water conditions as their cousins the bullhead. Under normal pond conditions, 6-8" channel catfish will reach sizes of well over 1' in 2 years, and eventually 2-3' in size.

## **Minnows:**

Minnows may be stocked as a forage fish with bass to increase food supply and growth rate, but are not required for the bass to survive. ■

---

# DEC Phosphorus Laws in Effect Fertilizers Affected

The New York State Department of Environmental Conservation's Division of Water wishes to get the word out about the 2010 Dishwasher Detergent and Nutrient Runoff Law. Through restrictions on dishwasher detergents and fertilizers that contain phosphorus, the law will reduce the quantity of phosphorus entering the State's waters.

## **Dishwasher Detergent Provisions Beginning 8/14/10:**

- Sale of dishwasher detergent containing phosphorus for household use is prohibited.

## **Beginning 7/1/13:**

- Sale or distribution of dishwasher detergent containing phosphorus for use at commercial establishments is prohibited.

## **Fertilizer Provisions**

### **Beginning 1/1/12:**

- Use of fertilizer containing phosphorus on non-agricultural lawns and turf is restricted to when a new lawn is being established or when a soil test indicates additional phosphorus is needed.
- Application of any fertilizer for

non-farm use is prohibited between December 1 and April 1.

- Application of any fertilizer within 20' of a waterbody or on paved surfaces is restricted.
- Retailers must display fertilizer that contains phosphorus separately from phosphorus-free fertilizer and must post signs notifying customers of the terms of the law.

**Additional information can be found at [www.dec.ny.gov](http://www.dec.ny.gov).**

## FARM SERVICE AGENCY UPDATES

Like all Federal agencies, the Farm Service Agency is operating with a very tight administrative budget.

Because of budget restrictions, we have been limited to the number of newsletters we can send out and the number of County Committee meetings that we can hold. It appears that the days of monthly FSA newsletters and County Committee meetings may be gone forever. Our challenge is to keep producers informed about FSA programs and deadlines in a manner that does not cost much money. We are asking producers who want to be contacted through email to provide our office with their email addresses. Please call the FSA office at 692-9940 (ext 2) if you would like to provide us with your email address.

FSA will have an exhibit in the Ag Center ( next to the milking parlor) at the Washington County fair. The fair runs from August 22nd through August 28th. Stop by our exhibit and pick up fact sheets and information on FSA programs.

In addition to email, producers can keep informed on FSA commodity, conservation, and Farm Loan programs in the following ways:

- Visit the FSA national website at [www.fsa.usda.gov](http://www.fsa.usda.gov)
- Call the office at 692-9940 (ext 2)
- Look for news releases on FSA programs in local newspapers and agricultural publications such as Country Folks.
- Come visit the FSA office in person. Our office hours are 8:00 am to 4:30 pm, Monday through Friday. The office is located in the USDA Service Center at 2530 State Route 40 in Greenwich, just north of the Hannaford entrance and traffic circle.

Our goal is to continue to keep all Washington county producers informed about FSA programs despite the budgetary restrictions that we are faced with. ■

## Upcoming Workshops

(continued from page 1)

Salem from Vermont empties into the Black Creek about a mile above this junction.

The Black Creek has a great deal of variety along its main branch which will provide for some interesting discussion points. Please register for this free workshop through the ASA website [agstewardship.org](http://agstewardship.org), or by calling the ASA office at 518-692-7285. The first 15 people to sign up with ASA, either through the website or by phone, will receive a voucher for a free ice cream sundae at Battenkill Valley Creamery where the tour will end. This walking/driving tour will start at Gardenworks in Salem and will be conducted rain or shine, so be prepared by bringing your mud boots, insect repellent, and plenty of questions.

Starting on November 19<sup>th</sup> we will begin a series of informational workshops about Rural Land Ownership. With many new landowners, and second home owners in the county we would like to help people develop a better understanding of land ownership in a rural area. We will have guest speakers to explain Ag District Law, Agricultural Assessment for tax relief, Soil Group Worksheets, and fair and realistic land rental rates and agreements. This first session will be held at the Freight Depot behind Hubbard Hall in Cambridge from 9am to 2pm on Saturday, November 19<sup>th</sup>, 2011. We hope to offer delicious wood-fired pizza from the community bread oven for lunch. Bring your questions, as our goal is to get correct information out to landowners and those anticipating buying land for an agricultural enterprise.

The second part of this series will be held during the early winter and will focus on Natural Resources Conservation Service (NRCS) programs for landowners. Scott Fistcher will explain the process for planning and signing up for conservation programs that are administered through the USDA NRCS offices. ASA will discuss the use of conservation easements as a tool for farmland and forest conservation.

Remember to check ASA and SWCD websites for more details. ■

## No-Till Drills for Rent

Remember, we have two no-till drills available to rent, a 7' Sunflower and a 10' Haybuster. Please contact our office for further information.



Updates can be found on our website:

[washingtoncountyswcd.org](http://washingtoncountyswcd.org)

# Roadway Washouts - Low Cost/High Benefit Solution

By Bill Keating

This has certainly been another year with a spring time to forget. We did not have the rainfall that other parts of the state had, but it was persistent. A few of the storms did give some intense downpours and it did cause some washouts on roadway surfaces. My guess is this is a recurring problem on many sites given the length and steepness of some roadways.

It occurred to me that a conservation practice utilized in the forest industry could be an effective remedy to stabilize roadway erosion situations. Mostly this would benefit the landowner directly, but some roadways are near water bodies, so this could go a long way to keeping excess sediment out of the water.

Water deflectors (Fig. 1) have been used with good success for many years. They work well on roadways that do not get plowed in the winters, since the deflector would likely get

damaged. We recommend them for pasture laneways or field access roads if they are sufficiently long or a continuous slope to keep them from washing out. If they are spaced adequately, they will gently direct the runoff flow off the road surface. It is very important to be certain where the water goes off the side of the road, that there is a rock lined area to keep the outlet from eroding. Figure 1 shows the typical plan view with a cross section showing how they are constructed. The spacing in feet is calculated using the equation  $(400 \div \text{slope } \%) + 100$ . An example is an 8% roadway, meaning that it rises up 8 feet in each 100 feet of length. Planned spacing would be  $(400 \div 8) + 100 = 150$  feet. If there was a roadway with an erosion problem but less than the recommended spacing, I would think placing a deflector in the middle of the slope somewhere would make sense.

Installing them with hand tools could be done, but roadways are often very tightly compacted so a small excavator or tractor bucket may be necessary. If anyone would like more information, please call us at 692-9940 x 3. ■

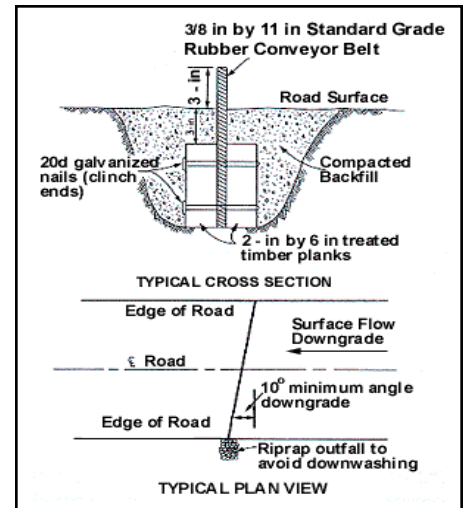


Figure 1

**CAPITAL TRACTOR INC.**

1135 State Rt. 29, Greenwich, NY 12834  
(518) 692-9611 FAX (518) 692-2210  
www.capitaltractorinc.com

Since 1966

**NEW HOLLAND CONSTRUCTION** **Mahindra** **NEW HOLLAND AGRICULTURE**

**LEADERSHIP YOU CAN COUNT ON**

**JOHN STOKOWSKI AND SONS, INC.**  
RT. 22A Box 197  
Middle Granville, New York 12849  
(518) 642-1610

The Long Green Line™ Since 1960

**WILEY BROS., INC.**

*Framing & Treated Lumber · Metal Roofing · Pole barn Supplies · Culvert Pipe · Hardware*

Ph: (518) 753-4266 PO Box 59· 1854 NY Rte 40  
Fax: (518) 753-6922 Schaghticoke, NY 12154  
wileybros@nycap.rr.com www.wileybrothersinc.com

**Korb Land Improvement, LLC**

**Excavating**  
Fully Insured • Free Estimates  
Walt Korb • Barry Korb

Office: (518) 686-4941 • Barry: (518) 461-0577 • Walt: (518) 461-4025  
126 Dickenson Road • Buskirk, New York 12028  
email: korblandimprovementllc@yahoo.com

# Roofwater Runoff - curse or resource?

By Joe Driscoll

With all of the rain we've had so far this year, everyone is all too familiar with the deluge of water that pours off roofs during a heavy rainfall event. This is especially true with larger, commercial buildings and barns. Left unchecked, heavy roof runoff can cause significant erosion and may transport a lot of pollutants to streams and other waterbodies. It can also end up in your basement. Controlling roof runoff isn't rocket science, and usually isn't that expensive. The water can also be collected and used for purposes such as irrigation, pool filling and even livestock water.

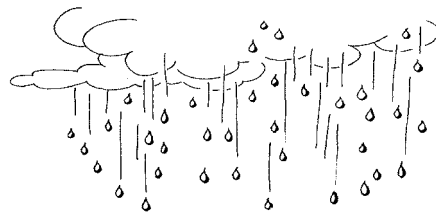
The most common method to collect and re-route roofwater is aluminum or vinyl gutters which mount on the building's fascia boards and connect to a rectangular downspout. The downspout should drain in a direction which will result in minimal erosion and pollutant transport. This outlet can also include a collection tank such as a barrel, stock tank, or pond.

Gutters work great during the "frost free" time of the year when water flows. However, the winter months present a couple of challenges. Freeze/thaw cycles which occur frequently in this climate from November through early April not only plug gutters with ice, but can also tear them off the roof. This is true especially on slate or metal roofs where snow and ice slide off in heavy chunks. If this situation makes gutters impractical for a given

roof, there's another option. Collecting roofwater in a constructed trough or "French drain" as it hits the ground is also effective. The trough or sub-surface drainpipe must then be routed to a stable outlet collection tank or a tank with an overflow to such an outlet. A stable outlet usually means a hard surface such as concrete or asphalt, a rock-lined channel, or a heavily vegetated area. The latter is preferable since paved surfaces often hold pollutants which can be transported by heavy roof flows.

Keep in mind that a large roof can concentrate thousands of gallons of water in just a few hours during a heavy rainfall. Most folks don't have the capabilities to store that much water, or even an immediate use for it. However, collecting 50 to 100 gallons can provide a good source for lawn and garden needs, or emergency use during power outages, etc.

Don't forget to look at our roofwater collection and stormwater runoff project just east of the Ag Center at the Washington County Fair. Also take a look at the rain barrel and rain garden at the south end of the County Bounty Building, just outside our SWCD Fair display. ■



## DATES TO REMEMBER:

9/15 Stream Corridor Management Workshop

11/19 Rural Landownership Workshop, Part 1

Early Dec. Cover Crop with Aeration Tillage Workshop

Check [washingtoncountyswcd.org](http://washingtoncountyswcd.org) for updates.



GRANVILLE VETERINARY SERVICE, P.C.  
LARGE ANIMAL

1987 COUNTY ROUTE 23  
P.O. BOX 9016  
GRANVILLE, NY 12832

JOHN W. RATH, DVM  
JOHN M. McDERMOTT, DVM  
KIRK C. AYLING, DVM  
SARAH M. JENSEN, DVM

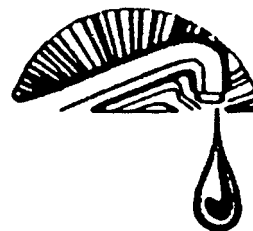
TEL.: (518) 642-1676  
FAX: (518) 642-1685  
WWW.GVSLA.COM

## DYDO & COMPANY

INCORPORATED  
POND CONSTRUCTION & REHABILITATION  
EARTHMOVING - CLEARING - EXCAVATING  
CRANES

44 ROUTE 30  
DORSET, VT 05251  
TELEPHONE: 802-362-1328 FAX: 802-362-6180  
WEB SITE: [dydoponds.com](http://dydoponds.com)  
E-MAIL: [dydoco@comcast.net](mailto:dydoco@comcast.net)

NOEL DYDO



## WEL-DUN, Inc.

Water Treatment

384 Dunbar Road  
Cambridge, NY 12816

518-677-8717

Fax: 518.677.1510

Pager: 888-677-3306

e-mail: [watermedic@aol.com](mailto:watermedic@aol.com)

Timothy J. Jansen

Cell: 518-791-1111

[www.wel-dun.com](http://www.wel-dun.com)



**Contact us at:**  
**USDA Service Center**  
 2530 State Route 40  
 Greenwich, NY 12834  
 Phone: 518-692-9940 ext. 3  
 Fax: 518-692-9942  
[www.washingtoncountyswcd.org](http://www.washingtoncountyswcd.org)

**Directors**

- John Rieger, Chairman**
- John Dickinson, Vice Chairman**
- Richard Conklin, Treasurer**
- James Lindsay, Director**
- Sara Idleman, Director**

**Staff**

- Joseph Driscoll, District Manager**
- Laurie Deyoe, Office Manager**
- Bob Kalbfliesh, Technician**
- Corrina Aldrich, Technician**
- Scott Fitscher, District Conservationist**
- William Keating, Soil Conservation Technician**

**Country Power Products, Inc.**  
**Country Living Center**

2339 State Rt. 40  
 Rts. 29 & 40 S  
 Greenwich, NY 12834  
 Phone: 518-692-1015  
 Fax: 518-692-1236  
 Email: [john@countrypowerproducts.com](mailto:john@countrypowerproducts.com)

*True Value*  
*AGWAY*  
*Nutrena*  
*STIHL*  
*Carhartt*  
*Carter*  
 We Ship! *ups*  
 Sales & Service

**CASE IH**  **Kubota**  
 MAREY PERGUNDON

**SALEM FARM SUPPLY, INC.**  
 5109 STATE ROUTE, SALEM, NY 12865  
 1-800-999-3276  
 1-518-854-7424

**GEHL.** **HESSTON** **NEW IDEA**  
 THE PRIME LINE

**FISH ORDER FORM**  
**ENCLOSED**

Washington County SWCD  
 USDA Service Center  
 2530 State Route 40  
 Greenwich, NY 12834  
 Return Service Requested

NONPROFIT RATE  
 US POSTAGE  
 PAID  
 Permit # 15  
 Fort Edward, N.Y.